

A huge thank you to everyone for their hard work so far - over the half way mark now!

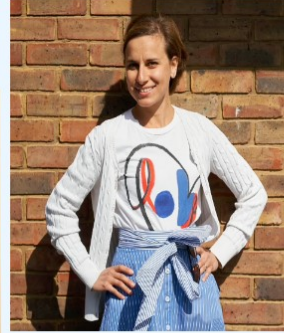


Hope all our new March starters have settled in now and have got to grips with the data collection - Please don't hesitate to ask via email or on the WhatsApp group if there are any questions or queries!

Interview of the month



Dr Sorana Galu



What is your role in the study?
Helping the units to submit accurate data.

Who is your ideal dinner guest?
Matt Groening

If you could have any superpower what would it be?
Mind reader.

What is your favourite thing about neonatal medicine?

I enjoy working with expert teams, and seeing how much we can influence the life of a little human being. I continue to be impressed with how resilient the newborns are and I do not dare to call them "fragile" anymore.

What are you most looking forward to coming out of lockdown? To see my family again - I miss them dearly

Data collection tips of the month

1 Ensure you are using the up to date Excel spreadsheet. This should prevent some of the issues previous trainees were having with anonymising data.

2 Some units may be changing local practice and switching to the updated NICE guidelines. This is no problem but if you could please make a note of the date of change and include that in your email submissions that would be very helpful.

3 If struggling to obtain data for lifebirths >34 weeks at your hospital, try your maternity matron, clinical governance leads and even ask if there is a "digital midwife"!

Useful contacts

Link for EOS Study Group
whatsapp group:

<https://chat.whatsapp.com/Jc80bLhHFqKHJg51zLnCB1>

Send completed data to:
c.piyasena@nhs.net
sorana.galu@nhs.net

Trainee support:
devangi.thakkar@nhs.net
rie.yoshida@nhs.net
joanna.o'sullivan@nhs.net
katie.evans7@nhs.net
catherine.longley1@nhs.net